



Loreto Secondary School Clonmel

Coleville Road, Clonmel, Co. Tipperary

Monday 19th October 2020

Dear Parents/Guardians and Students,

We have been informed by Public Health/HSE of a positive case of Covid-19 in a member of the school community.

A detailed examination of the case by Public Health identified no close or casual contacts within the school setting. **School can therefore proceed as scheduled.** *The identity of the individual is private and confidential. Please note the school may not share any details.*

We send the school's best wishes to the person affected for a full and speedy recovery.

Please see *page 2* to read a letter from The Department of Public Health.

Please be assured that we will keep you fully updated on any advice given by Public Health/HSE.

Yours faithfully,

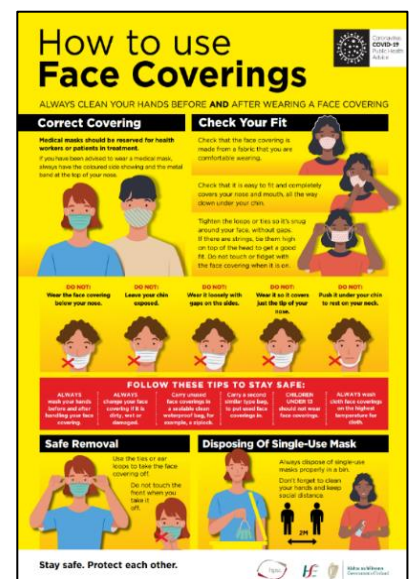
Anne Mc Grath,
Principal

Sarah Rice,
Deputy Principal

HSE Advice

Further information on COVID-19 is available at: <https://www.hpsc.ie> and <https://www.gov.ie/en/>

Or phone Public Health South East at 056 7784142 or HSE Live at 1850 24 1850





Feidhmeannacht na Seirbhíse Sláinte
Health Service Executive

16/10/2020

Re: Confirmed case of COVID-19 at your child's school.

A confirmed case of COVID-19 in your child's school, Loreto Clonmel, has been notified to the Department of Public Health HSE SE.

A public health risk assessment has been undertaken. No close contacts have been identified in the school. Your child has not been identified as a close contact at this time, your child does not need a test for Covid-19, they can continue to attend school, and no further actions are required at this time.

If your child develops any symptoms suggestive of Covid-19 infection (such as a cough, a fever, loss or change in sense of taste or smell), please do not send your child to school, contact your GP and begin restricting your child's movements, as per public health advice.

Restricted movement means avoiding contact with other people and social situations as much as possible. It is also sometimes called 'self-quarantine'.

Restricted movement means that your child stays home and:

- Does not go to school.
- Does not use public transport.
- Does not have visitors in your home.
- Does not go to the shops or pharmacy, unless absolutely necessary.
- Keeps away from older people, anyone with an underlying medical condition and pregnant women.

Further information on COVID-19 is available at: www.hpsc.ie and www.gov.ie
Or phone Public Health South East at 056 7784142 or HSE Live at 1850 24 1850

Yours sincerely,

Dr Carmel Mullaney
MCRN 16161
Department of Public Health
HSE South East